

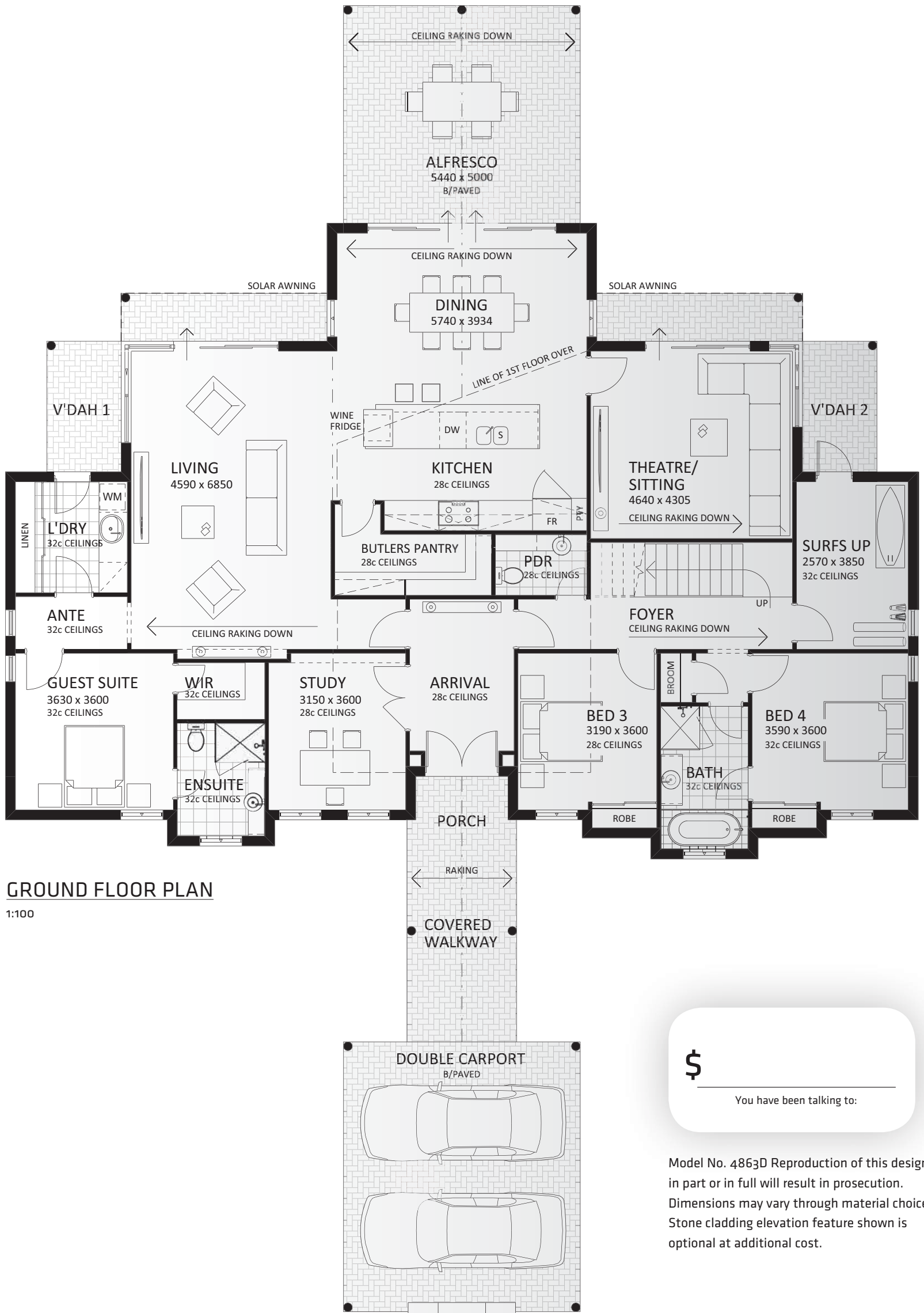
The Quedjinup Retreat



WE UNDERSTAND







\$ _____
You have been talking to:

Model No. 4863D Reproduction of this design in part or in full will result in prosecution. Dimensions may vary through material choice. Stone cladding elevation feature shown is optional at additional cost.



We understand what country living is all about.

The Quedjinup Retreat

The Quedjinup captures the epitome of a down south dream home, with surf breaks close by and a serenity unrivalled by city living. The design demonstrates a home in a truly rural environment, orientated to the north with external awnings capturing the winter sun and excluding the summer sun.

The soaring loft ceilings invite cross ventilation by forcing airflow through the home from the afternoon seabreeze.

One of the first things you notice about the Quedjinup home is how beautifully the traditional elevation blends with the surrounding bushland. Render feature walls, brickwork, cladding and bush poles, and an Australian landscaped garden add to the authentic outback feel as you walk through the paved double carport to the front entrance. If preferred, the carport could easily be converted to a two car garage.

The home has been designed as a chameleon for a variety of needs, the family weekender, a holiday share, the everyday home and the option to accommodate guests with their own private facilities, such as an ensuite and external access.

Double doors open to the foyer area with access to a private study or home office with large window views. The interior of the home has been styled with an eclectic mix of vintage and retro furniture and ornaments, with a 60's surf influence evident throughout the home.

The large free form living and kitchen area is enhanced by raking ceilings and views through sliding doors to the back alfresco area. Perfect for entertaining friends and family with a large workbench complete with integrated fridge and butlers pantry to store all those extra utensils and confine clutter. Being the heart of the home, the living room is perfectly designed for those on acreage with beautiful 360 degree views or for others who desire open plan living.

As you walk through the main living areas to the outdoor alfresco you can appreciate how the home has been extended to blend perfectly with its bush setting, a great place to add a fire pit or string a hammock between the bush poles.

The theatre located to the right of the dining area has sliding door access to the verandah, and would also make a great activity room.

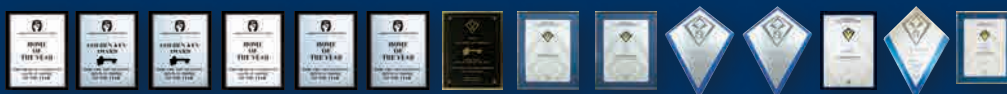
Other features of the lower floor include a spacious private guest room with ensuite and walk in robe, and a further two kids bedrooms with bathroom and powder room in a separate wing for added privacy.

The surfboard room located in the kid's wing with its own outdoor access is sure to catch the attention of any family who love their beach lifestyle. A great place to lock up the outdoor gear if the home is being used for holiday share. This room could also be converted into a workshop or increased in size for an additional room.

The upstairs loft acts as an adult retreat with the master suite, walk in robe and double basin ensuite. Minimal furniture pieces enhance the simplicity and calming atmosphere of the loft, while an overhead sky light allows for natural light to fill the room.

The Quedjinup has been beautifully designed with a contrast of soaring ceilings, free form living areas and secluded bedroom areas to retire to for privacy.

This home can be easily modified to suit a particular family, with additional floorplan options available. Many or all of the features shown in this house could be easily incorporated into your own design.



Award winning designs. Since The Rural Building Company commenced operations we have won an impressive number of awards for design excellence, including seven Golden Key awards. Each year we add more to our collection.

WE UNDERSTAND



Our homes are available as far north as Kalbarri, Albany in the Lower Great Southern, Augusta in the South West, east as far as Merredin and just about everywhere in between. In regions not serviced by The Rural Building Company we entrust the building of our homes to WA Country Builders. All Rural Building Company homes offer a range of materials. Depending on the region you are building, some construction methods and materials may not be available. Free-call 1800 643 800

